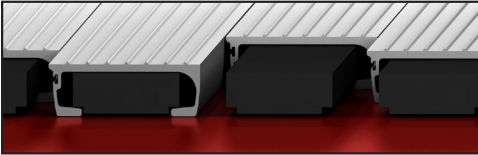


# LIVE FLOORS®

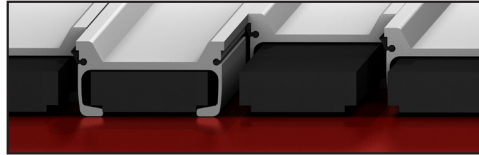
## STANDARD



Deck Type	Thickness (in.)	Width (in.)	Height (in.)	Part No.
35-2	1/8	3-5/8	1-1/4	41-268
35-3	3/16	3-5/8	1-5/16	41-275
35-4	1/4	3-5/8	1-3/8	41-270
35-5	3/8	3-5/8	1-1/2	41-104
37-2	1/8	3-7/8	1-1/4	41-271
37-3	3/16	3-7/8	1-5/16	41-272
37-4	1/4	3-7/8	1-3/8	41-273
37-6	3/8	3-7/8	1-1/2	41-283
40-3.5	7/32	3-31/32	1-11/32	41-2951
40-5	11/32	3-31/32	1-15/32	41-3009

The industry standard for more than 30 years. Best suited for relatively dry, bulk loads up to 45 tons.

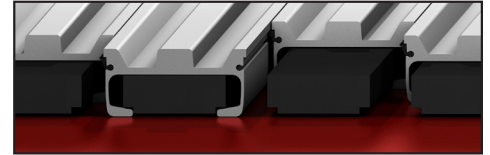
## DOUBLE RIDGE



Deck Type	Thickness (in.)	Width (in.)	Height (in.)	Part No.
35-3 DR	3/16	3-5/8	1-13/16	41-3462
35-4 DR	1/4	3-5/8	1-7/8	41-3958
37-3 DR	3/16	3-7/8	1-13/16	41-3482
37-4 DR	1/4	3-7/8	1-7/8	41-3979
40-3 DR	3/16	3-15/16	1-13/16	41-3486
40-4 DR	1/4	3-15/16	1-7/8	41-3795

Recommended for use in the solid waste/recycling industry. Its two ridges sit a full 1/2" above the deck surface and are designed to take the force of the load first, cushioning the deck from the conditions of direct dumping.

## TRIPLE RIDGE



Deck Type	Thickness (in.)	Width (in.)	Height (in.)	Part No.
35-3 TR	3/16	3-5/8	1-13/16	41-4164
37-3 TR	3/16	3-7/8	1-13/16	41-4167
40-3 TR	3/16	3-15/16	1-13/16	41-4184

Recommended for the most extreme top loading conditions. These slats have two 1/2" side ridges and a 1" wide center ridge all running the full length of each deck slat. The ridges cushion the deck from the impact associated with top loading.

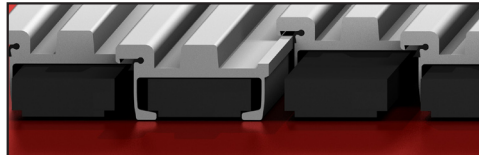
## LEAK-RESISTANT



Deck Type	Thickness (in.)	Width (in.)	Height (in.)	Part No.
35-4	1/4	4-3/32	2	41-3281
37-4	1/4	4-3/32	2	41-5025
40-4	1/4	4-7/16	2	41-3305
35-4 Side	1/4	3-23/32	1-1/2	41-3282
37-4 Side	1/4	3-31/32	1-1/2	41-3297
40-4 Side	1/4	4-1/16	1-1/2	41-3306

Deck floor thickness is 1/4" with a 3/8" lip overlapping the next slat and covering the seal to form a shock absorbing ridge. This locks out grit and debris to assure consistent, clean unloading.

## LEAK-RESISTANT HD



Deck Type	Thickness (in.)	Width (in.)	Height (in.)	Part No.
35-4 HD	1/4	4-3/32	2	41-5025
37-4 HD	1/4	4-11/32	2	41-5077
40-4 HD	1/4	4-7/16	2	41-5205
35-4 HD Side	1/4	3-23/32	1-1/2	41-5026
37-4 HD Side	1/4	3-31/32	1-1/2	41-5078
40-4 HD Side	1/4	4-1/16	1-1/2	41-5206

Designed especially for refuse, municipal solid waste and demolition debris. This deck is like the Leak-Resistant deck but with the addition of a 5/8" solid ridge running the length of each deck slat.

## W FLOOR



Deck Type	Thickness (in.)	Width (in.)	Height (in.)	Part No.
W Slat	1/2	3-1/2	1-5/8	41-5214
W Subdeck	.150	13	1-1/2	41-5213

The W-Floor has been designed specifically to meet the needs of the refuse industry and its demands for a leak-proof floor. The aluminum Sub-deck extrusions are interlocked to create a leak-proof pan under the slats.

## TOPSEAL™



Deck Type	Thickness (in.)	Width (in.)	Height (in.)	Part No.
35-2 Top Seal	1/8	3-15/16	1-21/32	41-4337
35-3 Top Seal	3/16	3-15/16	1-23/32	41-4693
37-2 Top Seal	1/8	4-7/32	1-21/32	41-4414
37-3 Top Seal	3/16	4-7/32	1-21/32	41-4684
35-2 Top Seal - Side	1/8	3-23/32	N/A	41-4436
35-3 Top Seal - Side	3/16	3-23/32	N/A	41-4694
37-2 Top Seal - Side	1/8	3-31/32	N/A	41-4437
37-3 Top Seal - Side	3/16	3-31/32	N/A	41-4685

Overlapping deck seals without the use of plastics means there's no seal to wear out or replace. The floor is stiff resistant, making it ideal for use in the agricultural and wood products industries.

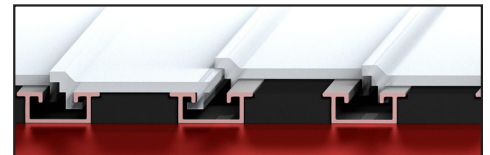
## TUFDECK™



Deck Type	Thickness (in.)	Width (in.)	Height (in.)	Part No.
35-4 Tufdeck	1/4	3-15/16	1-13/16	41-4434
37-4 Tufdeck	1/4	4-7/32	1-13/16	41-4420
35-4 Tufdeck - Side	1/4	3-11/16	N/A	41-4435
37-4 Tufdeck - Side	1/4	3-31/32	N/A	41-4422

A rugged live floor deck designed for use with the demanding loads of the refuse industry in mind. The overlapping deck slats create their own seal, eliminating the need for plastic deck seals.

## PLASTIC



Deck Type	Thickness (in.)	Width (in.)	Height (in.)	Part No.
Plastic	1/4	4	15/16	39-5023
Plastic Subdeck	N/A	2	3/4	41-5024

Our Plastic deck is half the weight of an aluminum deck, with bearing-less operation. Designed to meet the needs of the document destruction industry.